

# Recreational Sport Shooting

Be a good steward of the land.

## Know before you go

### Know what activities you might encounter

Wildlife and other recreational users are some of the things and activities you might encounter on public lands.

### Know the rules

Be sure to check the rules and regulations in the area you are visiting.

### Know the potential of your firearm

As you are selecting your safe shooting area, be sure to keep in mind your firearm's maximum range, and be sure you have a safe backstop to contain the bullet. A dirt bank is best.

## Your safety, your responsibility

There may be times when users of public lands or property owners may encounter illegal uses of the land. If you do not like the situation, leave and find another place.

Please report violations and safety concerns as soon as possible. Report problems to the County Sheriff.

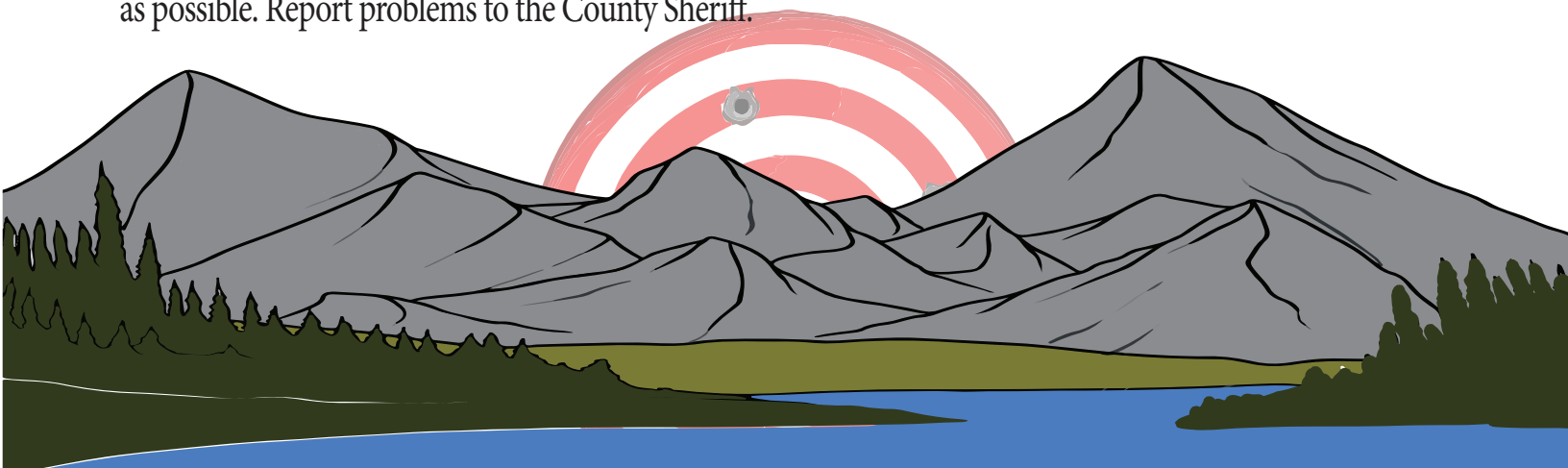
## Keep it safe

### Follow fundamental rules of firearm safety:

1. Treat every gun as if it is loaded.
2. Always keep the firearm pointed in a safe direction.
3. Keep your finger off the trigger and out of the trigger guard until your sights are on the target and you are ready to shoot.
4. Always be sure of your target and what is beyond - look, listen, and walk a perimeter of at least 150 yards.
5. Continually check the area for other users.
6. Do not use alcohol or other drugs while shooting.

## Keep it clean

Remember to pick up your spent shells, target remnants, clay pigeons and anything else you brought with you. Be a good steward of the land and pick up trash, even if it's not your own.

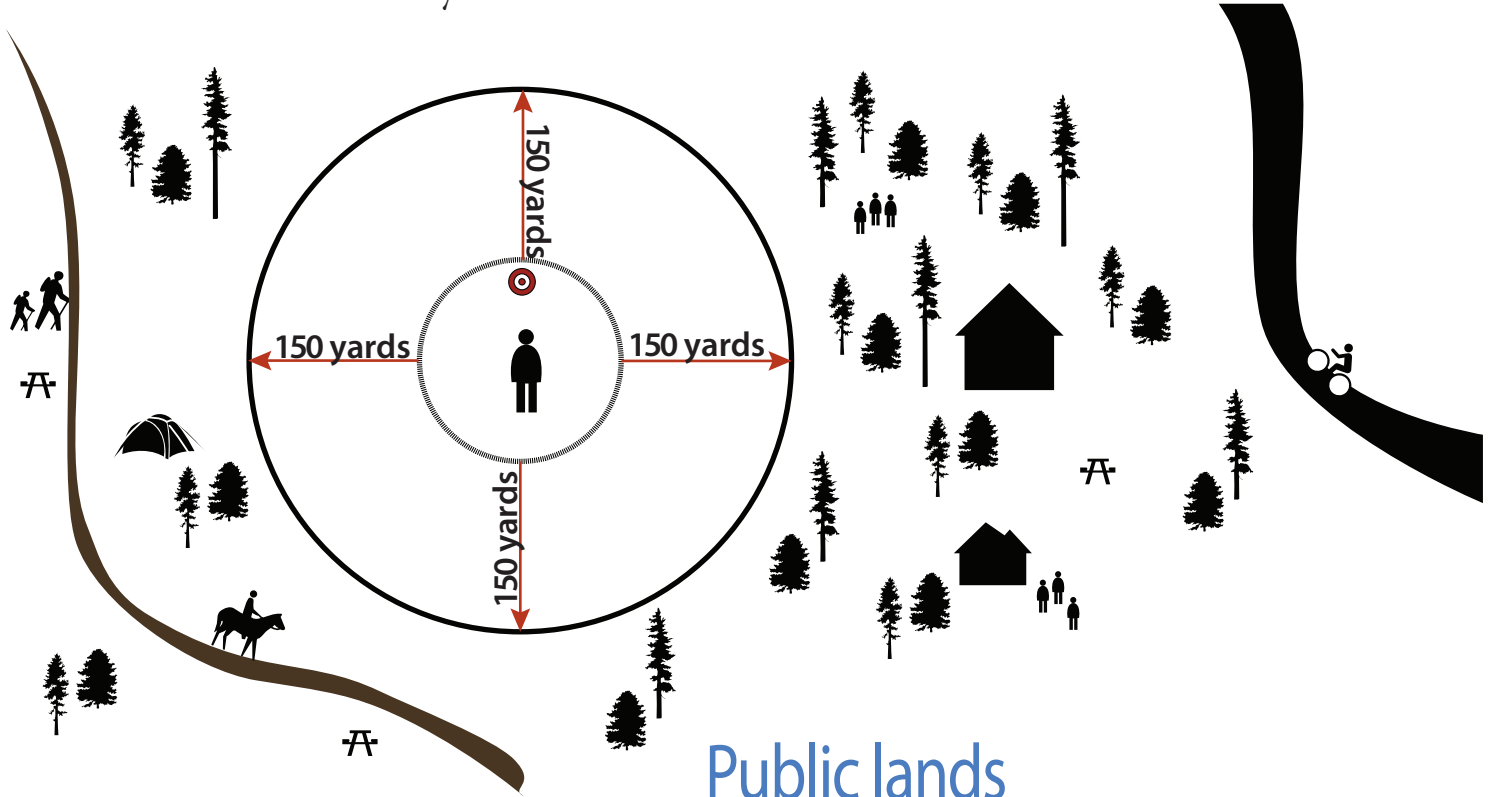


# Did you know?

To shoot safely, you should be at least 150 yards from a residence, building, campsite, developed recreation area or occupied area.

150 yards = 1.5 football fields, 4.5 city blocks, 450 feet or 138 meters

Do not shoot across a road or body of water.



## Public lands

People living near, or visiting, public lands may encounter other recreational users engaging in activities like hiking, hunting, camping, climbing, biking, OHV riding, recreational sport shooting, etc., which are generally permitted and occur daily.

Recreationists should know that interspersed between public lands there are lands and roads that are private and access may not be permitted.

## Want more information?

[www.SportShootingPartners.org](http://www.SportShootingPartners.org)

[facebook.com/SportShootingPartners](https://facebook.com/SportShootingPartners)

[twitter.com/NFRRSSMP](https://twitter.com/NFRRSSMP)

